

Welcome to our Department of Mechanical Engineering

Your Guides for today

Department of Mechanical Engineering



Dr. Heidi Zinser

Degree Program Coordinator and Study Advisor at the Department of Mechanical Engineering

- Degree programs: Electromobility-ACES, Dual Mechatronics – Medical Device Engineering
- ERASMUS+ and Direct Exchange programs for studying abroad,
 - ✓ International Outgoings, Incomings
 - ✓ Learning agreements

Ramon Braun, student assistant

Sarah Hager, student assistant

Faculty Day for International Students

Today's program



April 9th 2026	Program
11:00 h – 11:30 h	Guided library tour
12:00 h – 13:00 h Room: SR TM 00.044	Welcome and Information from the Department of Mechanical Engineering
14:30 h – 15:30 h	Campus Rallye
15:30 h – 17:00 h	Get together with drinks and pretzels (Meeting on the „Red Place“ or in case of rain: „Foyer CBI“, Cauerstr. 4)



Image: FAU/Erich Malter

Departments of the Faculty of Engineering

Mechanical
Engineering (MB)

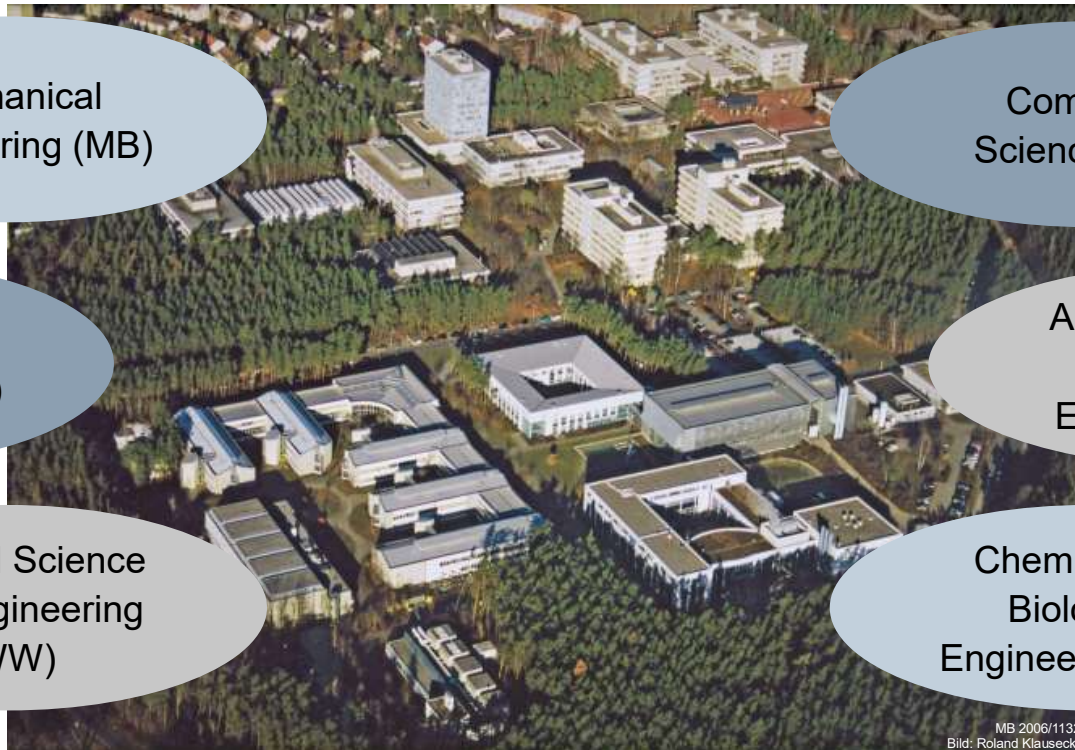
Computer
Science (INF)

Electrical
Engineering (EEI)

Artificial Intelligence
in Biomedical
Engineering (AIBE)

Material Science
and Engineering
(WW)

Chemical and
Biological
Engineering (CBI)



MB: 2006/11323
Bild: Roland Klausecker

Our degree programs



Overview of our degree programs

Faculty of Engineering

Computer Science	Electrical Engineering	Mechanical Engineering
------------------	------------------------	------------------------

Mechanical Engineering

Mechatronics

International Production Engineering and Management

Industrial Engineering and Management

Electromobility - ACES

MB 2006/11323
Bild: Roland Klausecker

Faculty of Business, Economics, and Law

School of Business and Economics




Image: FAU

Degree programs (offered in German language)

Mechanical Eng., Industrial Eng. and Management, Mechatronics



Mechanical Engineering („Maschinenbau“)

- Teaching of fundamental knowledge in mechanical engineering
- Majors in e.g. computer-aided product development and production engineering

Industrial Engineering and Management („Wirtschaftsingenieurwesen“)

- Interdisciplinary combination of engineering with business and economics
- Majors in mechanical engineering or electrical engineering

Mechatronics („Mechatronik“)

- Interdisciplinary degree program
- Combination of mechanical and electrical engineering with information technology




International Production Eng. and Management

Degree program partly offered in English language





International Production Engineering and Management

- Interdisciplinary degree program combining engineering with business and economics
 - Basic modules e.g. Mathematics, Mechanics mainly in German language
 - Compulsory modules in engineering and economics e.g. Production technology, Quality management in English language
 - Further lectures with international context e.g. International supply chain management, global operations strategy in English language
- Modules in English are open to incoming exchange students at FAU



Friedrich-Alexander-Universität
Erlangen-Nürnberg

Bachelor | Master
**International
Production Engineering
and Management**



ip.studium.fau.de

STUDIENGANG
International Production Engineering and Management


STUDIENDAUER
Bachelor: 6 Semester (Bachelor of Science),
Studienbeginn im Sommer- und Wintersemester möglich
Master: 4 Semester (Master of Science) als Studienrichtung
im Maschinenbau, Teilzeitstudium möglich

ZUGANGSVORAUSSETZUNGEN FÜR BACHELOR
Keine

MÖGLICHE BERUFSFELDER
Produktion und Fertigungsplanung international aufgestellter
Industrieunternehmen

INDIVIDUELLE STUDIENGESTALTUNG
Der Studiengang soll deutschsprachige Studierende für das
Berufsfeld der Produktionstechnik im internationalen Umfeld
qualifizieren. In einem empfohlenen, integrierten Auslandssemester
an einer unserer über 50 Partneruniversitäten oder während
eines Auslandspraktikums können Sie internationale Erfahrungen
sammeln und Ihre Fremdsprachenkenntnissen ausbauen.

STUDIENFACHANTEILE IM BACHELORSTUDIUM



- Maschinenbau (D/E)
- Wirtschaftswissenschaften (D/E)
- Fremdsprachen und soft skills (D/E)
- Informatik (D)
- Elektrotechnik, Elektronik, Informationstechnik (D)
- Werkstoffwissenschaften (D)
- Mathematik (D)

INT. PRODUCTION ENGINEERING AND MANAGEMENT
Der deutsche Maschinen- und Anlagenbau steht als Schlüssel-
industrie und Motor der Wirtschaft für Innovationskraft und
technologische Leistungsfähigkeit des Standortes Deutschland.
Die Branche ist führender Anbieter von Maschinen weltweit.
> Legen Sie den Grundstein für Ihre berufliche Karriere: Auf
Grund des hohen Exportanteils sind alle größeren Unterneh-
men im Bereich der Produktionstechnik international aufge-
stellt und suchen dringend genauso international ausgerich-
tete Fach- und Führungskräfte, die neben ihrem technischen
Fachwissen auch Kompetenzen in Betriebswirtschaft und
Fremdsprachen mitbringen.
> Auch die deutsche Fahrzeugindustrie hat international eine sehr
hohe Bedeutung und stellt einen attraktiven Arbeitgeber dar.

Foto: Shutterstock.com/Thomas Müller

Electromobility - ACES

Bachelor's in German and Master's program in German + English



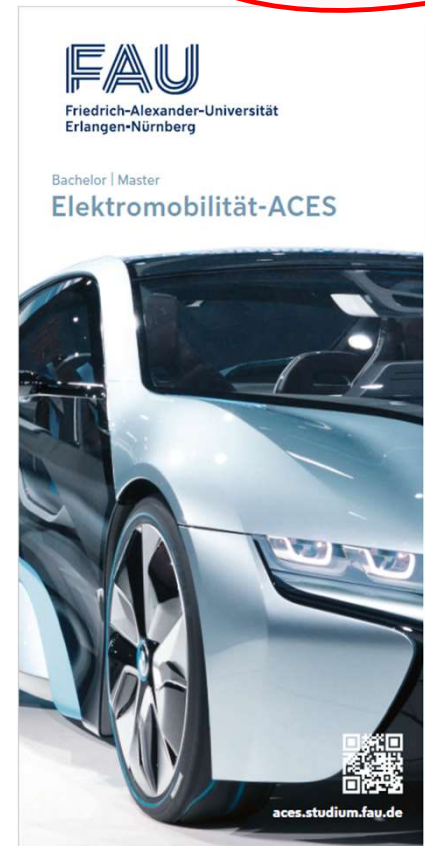
Master can be studied completely in English

Electromobility-ACES Specialization fields:

- **A** - Artificial Intelligence (AI) and Autonomous Driving
- **C** - Connectivity
- **E** - E-Powertrain
- **S** - Sustainable mobility and Production technology

→ Students choose majors in 2 of the 4 specialization fields

- Many modules are available in English for ACES Master students
- Degree program - initiated in winter semester 2022/23
- More Information on ACES:
<https://www.aces.study.fau.eu/>



STUDIENGANG
Elektromobilität-ACES

STUDIENDAUER
Bachelor: 6 Semester (Bachelor of Science)
Master: 4 Semester (Master of Science) deutsch oder englisch

ZUGANGSVORAUSSETZUNGEN FÜR BACHELOR
keine

MÖGLICHE BERUFSFELDER
Vom e-Scooter über Elektroautos bis hin zum Zukunftsfeld elektrisches Fliegen - Elektromobilität boomt und Spezialistinnen und Spezialisten für diesen Bereich sind äußerst gefragt.

INDIVIDUELLE STUDIENGESTALTUNG?
Im Bachelorstudium erfolgt eine freie Schwerpunktwahl in den vier Bereichen ACES (s.u.) nach erfolgreichem Absolvieren der Pflichtmodule. Im Masterstudium ist dies ab Studienbeginn möglich.

STUDIENFACHANTEILE IM BACHELORSTUDIUM

DER ELEKTROMOBILITÄT GEHÖRT DIE ZUKUNFT!

- > Bereits ab ca. 2025 wird die Herstellung eines Elektroautos mit vergleichbaren Leistungsdaten günstiger sein als die eines Verbrennerautos.
- > Von Elektrotechnik über Maschinenbau, Informatik und Künstliche Intelligenz, Werkstoffwissenschaften bis zu Chemie- und Bioingenieurwesen: Das Studium ist sehr vielfältig angelegt und Sie können aus allen diesen Bereichen passende Fächer wählen.
- > Die wählbaren Vertiefungen im Studium gehen weit über die reine Elektromobilität hinaus und spiegeln die Kompetenzen der Technischen Fakultät der Universität und die Handlungsfelder für die Zukunft der Mobilität wider:
 - AI & Autonomous Driving
 - Connectivity
 - E-Powertrain
 - Sustainable Mobility and Production Technology

Foto: Hubertus/Photo Point

Institutes at the Department of Mechanical Engineering



Applied Mechanics



Manufacturing Technology



Resource and Energy Efficient Production Machines



Continuum mechanics / Biomechanics



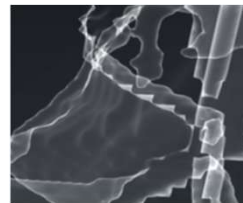
Polymer Technology



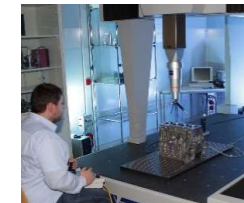
Factory Automation and Production Systems



Applied Dynamics



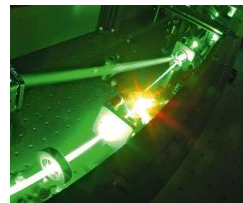
Casting Technology



Manufacturing Metrology



Engineering Design



Photonic Technologies

Our „Incomings“ Website

Information for incoming exchange students at Dep. of Mechanical Eng.



<https://www.department.mb.tf.fau.de/incomings/>

FAU Friedrich-Alexander-Universität
Department Maschinenbau

Department > Forschung > Studium > Menü ☰

Start / Incomings

Incomings

- Why choose Mechanical Engineering at FAU? ▾
- Requirements ▾
- Semester dates ▾
- List of our modules in English language: Engineering (Bachelor and Master level) ▾
- List of our modules in English language: Management (Bachelor level, may also be taken by Master exchange students) ▾
- List of our modules in English language: Management (only for Master students) ▾
- Bachelor's thesis, Project thesis, Master's thesis ▾
- Language courses ▾
- Contact and Links ▾

Department Maschinenbau

Our „Incomings“ Website

Information for incoming exchange students at Dep. of Mechanical Eng.



<https://www.department.mb.tf.fau.de/incomings/>

List of our modules in English language: Engineering (Bachelor and Master level)

Engineering (Bachelor and Master level)	Link to lecture	Link to module ³	Lecturer	ECTS in winter sem.	ECTS in summer sem.	Level ¹
Automotive Engineering 1	Lecture	Module	Jean-Marc Gales	2,5	–	advanced (B, M)
Automotive Engineering 2	Lecture	Module	Dengler e.a.	–	2,5	advanced (B, M)
Production Technology 1 with Exercises (with training in technical english)	Lecture	Module PT I+II	Merklein e.a.	–	3,75	basic (B)
Production Technology 2 with Exercises (with training in technical english)	Lecture	Module PT I+II	Hanekamp, Franke, Müller	3,75	–	basic (B)
Advanced Seminar on International and Sustainable Production	Lecture	Module	div.	2,5	2,5	basic (B)
Laser Technology	Lecture	Module	Kristian Cvecek	5	–	advanced (B, M)
Engineering of Solid State Lasers	Lecture	Module	Martin Hohmann	–	2,5	advanced (B, M)
Integrated Production Systems (E-Learning course at vhb)	Lecture	Module	Risch, Hofmann	5	5	advanced (B, M)
International Supply Chain Management (E-Learning course at vhb)	Lecture	Module	Risch, Hagen	5	5	advanced (B, M)

German language courses:

Please register at the FAU language centre
<https://sz.fau.eu/>

Further courses from other Departments at the Faculty of Engineering can usually be taken as well.

Courses open for exchange students

Useful links to other departments and study programs



Faculty of Engineering: International Degree programmes and lectures

<https://www.tf.fau.eu/studying/international/information-for-international-applicants/>

Department of Chemical and Biological Engineering

<https://www.cbi.tf.fau.de/files/2022/06/Courses-in-English-for-exchange-students-CBI-2022-1.pdf>

Department of Electrical Engineering

<https://www.eei.tf.fau.de/studium/international/coming-to-fau-eei/incomings/>

Department of Computer Science

<https://www.informatik.studium.fau.de/studierende/erasmus-incoming-students/#CS-courses-FAU-incoming>

Medical Engineering

<https://www.medical-engineering.study.fau.eu/prospective-students/incoming-exchange-students-2/#sprungmarke2>

Information about courses on „campo“

The screenshot displays the 'campo' website interface. At the top, the URL 'www.campo.fau.de' is shown. The main navigation menu includes 'Home', 'Admission', 'Studies offered', and 'Organisation'. The 'Studies offered' menu item is highlighted with a red box and a blue arrow pointing to the right. Below the navigation menu, a 'Main menu' section lists several options: 'Search for courses' (highlighted with a red box and a blue arrow pointing to the right, labeled 'A'), 'Search for special events', 'Show current courses', 'Show university course catalog' (highlighted with a red box and a blue arrow pointing to the right, labeled 'B'), 'Module descriptions', 'Show course of studies schedule', and 'Show lecturers timetable'. A 'Close [ESC]' button is located at the bottom of the navigation menu.

On the right side, the 'Search for courses' interface is shown. It includes a search bar with the placeholder text 'e.g. number, title, lecturers' and a search button. Below the search bar, there are input fields for 'Semester-independent title', 'Short text', and 'Semester-dependent title'. The 'Semester' dropdown menu is set to 'Winter semester 2024'. There are also dropdown menus for 'Course type' and 'Teaching language', each with a green plus sign icon.

Below the search interface, the 'Course catalogue' is displayed. It shows a list of faculties: 'Faculty of Humanities, Social Sciences and Theology', 'Faculty of Business, Economics and Law', 'Faculty of Medicine', 'Faculty of Sciences', 'Faculty of Engineering' (highlighted with a yellow background), 'Electives, soft skills and language courses', and 'FAU Scientia guest student program'.

Information about courses on „Campo“

Semester planning

Events Contents Course catalog Modules and degree programs

Basic data ▾

Title	Production Technology I	Course type	Lecture
Short text	PT eng	Module frequency	Only in summer semester
Organizational unit	<ul style="list-style-type: none">TechFak Elektromobilität-ACES Master of Science (Verantwortlicher)TechFak International Production Engineering and Management Bachelor of Science (Verantwortlicher)TechFak Medizintechnik Bachelor of Science (Verantwortlicher)Lehrstuhl für Fertigungstechnologie (Verantwortlicher)TechFak International Production Engineering and Management Austauschstudium Bachelor (Verantwortlicher)	ECTS credits	2.5
		Semester hours per week	2.0
		Link to StudOn course (login)	Parallelgruppe 1: Production Technology I

Production Technology I ▾

[Save to schedule](#) [Export data as iCalendar \(.ics\)](#) [Individual dates](#) [Open details](#)

Semester hours per week	2.0
Teaching Language	english
Responsible	<ul style="list-style-type: none">Dr. Kristian CvecekProf. Dr.-Ing. Michael SchmidtProf. Dr.-Ing. Marion MerkleinProf. Dr.-Ing. Dietmar Drummer

Changes	Frequency	Weekday	From - To	Cancellation date	Start date - End date	Exp. Att.	Comment	Lecturer(s)	Room
	Weekly	Mon	2:15 PM - 3:45 PM	<ul style="list-style-type: none">05/20/2024	Apr 15, 2024 - Jul 15, 2024	81		<ul style="list-style-type: none">Dr. Kristian CvecekProf. Dr. Hinnerk HagenahProf. Dr.-Ing. Michael Schmidt	11906.01.040.(H20)

Find out about teaching language, time and venue of the course (e.g. lecture, exercise, seminar).

Registration for Courses on „StudOn“

Semester planning

Events Contents Course catalog Modules and degree programs

Basic data ▾

Title	Production Technology I	Course type	Lecture
Short text	PT I eng	Module frequency	Only in summer semester
Organizational unit	<ul style="list-style-type: none">TechFak Elektromobilität-ACES Master of Science (Verantwortlicher)TechFak International Production Engineering and Management Bachelor of Science (Verantwortlicher)TechFak Medizintechnik Bachelor of Science (Verantwortlicher)Lehrstuhl für Fertigungstechnologie (Verantwortlicher)TechFak International Production Engineering and Management Austauschstudium Bachelor (Verantwortlicher)	ECTS credits	2.5
		Semester hours per week	2.0
		Link to StudOn course (login)	Parallelgruppe 1: Production Technology I



STUDON

NEUE FUNKTION "ÜBERSICHT ÜBER MEINE ANMELDUNGEN" AB JETZT VERFÜGBAR! Weitere Informationen unter Support > StudOn-News

STUDON-TOOLTIME "GESTALTEN MIT SEITENEDITOR, INHALTSSEITE & OBJEKTBLOCK" Am Mittwoch, 20.03.2024, findet von 14-15 Uhr die nächste Tooltime via Zoom statt. Der Zoom-Link ist unter Magazin > Schulungste...

NEUE FUNKTION "ÜBERTRAGUNG DER CAMPO-VERBINDUNG AUF EINEN CAMPO-KURS DES VORSEMESTERS" AB JETZT VERFÜGBAR! Weitere Informationen unter Support > StudOn-News

Magazin > 5. Technische Fakultät > 5.4 MB > LFT > Campo-Kurse: Sommer 24 [DP Maschinenbau/Merklein] > Production Technology I

Magazin

Production Technology I
Vorlesung: PT I eng, 2 SWS, Englisch

Verfügbarkeit

Zugriff Unbegrenzt – wenn online geschaltet

Aufnahmeverfahren Zur Zeit ist keine Aufnahme möglich.

Lehrveranstaltung

Titel Production Technology I (PT I eng)

Veranstaltungstyp Vorlesung

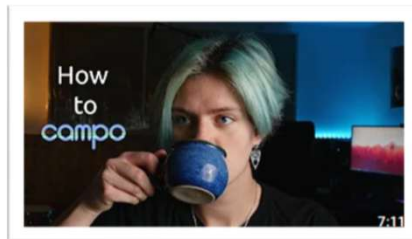
Kommentar Die Vorlesung Production Technology I wird nicht als Präsenzvorlesung durchgeführt. Jede Woche werden für Sie aufgezeichnete Vorform statt.

Beteiligte Einrichtungen • Lehrstuhl für Fertigungstechnologie (1514001100)

Join the corresponding group in StudOn to get access to lecture notes, study material etc.

Please note: For some courses a password is required which you will receive in the first lecture!

Social Media – Additional information and help



For more and detailed help on how to create your timetable in campo watch our YouTube video:
#meineFAU - Der Uni Vlog. Stundenplan erstellen - Campo für Anfänger*innen

→ English subtitles available



And join us on Instagram for regular inspiration and help at **@uni_fau** **@tf.fau** and **@dmb_fau**

Contact Information



<https://www.department.mb.tf.fau.de/studium/studien-service-center/>

To contact us: please **ONLY** use our [contact form](#)
(on the Study-Service-Center (SSC) webpage)



Dr. Heidi Zinser

Degree Program Coordinator and Study Advisor,
Study abroad, International Outgoings & Incomings
(Erasmus+ and Direct-Exchange Programs)



Dipl.-Phys. **Patrick Schmitt**

Degree Program Coordinator
and Study Advisor



Alexander Nasarow, M.Sc.

Degree Program Coordinator
and Study Advisor



Meike Lieret, M.Sc.

Degree Program Coordinator
and Study Advisor

Please note:

- We do our best to answer all requests carefully. Please understand that it can take a few days until you receive an answer.
- We kindly ask you to send **only one request** and refrain from sending “reminders”.
- If it is really urgent, please indicate it in the subject line of the contact form: “Urgent:”
- We appreciate your understanding 😊

Questions regarding your studies at the Dep. of Mechanical Engineering?

We offer consultation hours online via zoom or in presence (with registration)!

<https://www.department.mb.tf.fau.de/studium/studien-service-center/>

Summary – Your Start at FAU

- **Course selection:** it is often possible to choose courses from other Departments
- **Registration period for examinations: (provisionally) May 18th – June 7th** → please make sure to register (via campo) for the exams!
- **Point of contact**
 - Study-Service-Centre Mechanical Engineering: Learning Agreements; questions regarding your degree program or any academic aspects of your studies
 - Team Mobility at FAU (mobility@fau.de): Organizational aspects regarding your exchange program
 - “Regionales Rechenzentrum Erlangen (RRZE)”: IdM, assignment of (SSO) passwords, FAU-Mailbox, newsletters,... for useful tips see also: https://www.rrze.fau.de/files/2020/09/erstsemesterinfo_englisch.pdf



Questions?

**Thank you
for your attention!**